



KRUMBEIN

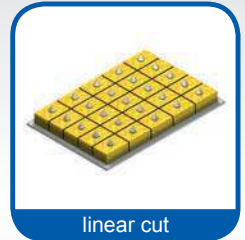
• *rationell* •

Cakes and confection cutting machines TKSM

Vertical slicer for cutting of round and rectangular baking goods



round cut



linear cut



linear cut

exact cut • quality at first glance



Cakes and confection cutting machines

• series TKSM •

Double blade system

- perfect cutting results, via reciprocating blade motion
- for various requirements are different microsections and shape of blades available
- long life time of the blades by branded quality steel



» Blade heating

- up to 150°C/300°F according to requirement via parameter adjustment

» OLM

- as simplification measure for cleaning and maintenance, the knife drive and electronically elements are positioned above the working space
- round-cutting unit and conveyor for linear cut could be removed for cleaning and maintenance

» Simple use and control

- TFT touch display with icon-guided user interface
- menu-guided machine control (VPS - visual programming system)



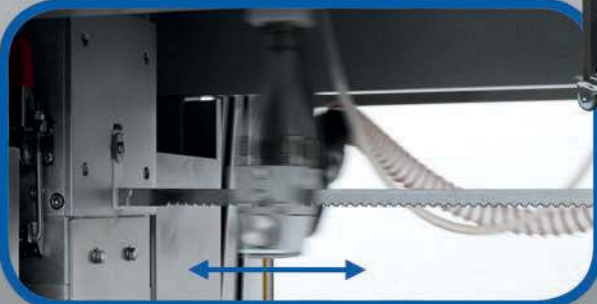
» Blade cleaning system

- automatically blade cleaning system as optional equipment
- Innovative system, cleans blade with both steam and suction power between the cutting cycles



» Working ergonomics

- the round-cutting unit can be easily pulled by the worker for a comfortable positioning and removal of the products
- LED lighting for the working space, shows also the operating mode of the machine
 - green - operable
 - white - work in progress
 - red - intrusion in security space



TKSM machines for cutting of round baking products [TKSM-R]



» TKSM-R 620 OLM Touch «



» TKSM-R 820 TWS Touch «

General:

- round-cutting unit for an exact portioning of round products like tarts, pies, etc.
- simultaneously cutting of two products
- max. diameter 285mm / 11.2 in. at TKSM-R 620
- max. diameter 320mm / 12.6 in. at TKSM-R 820
- cutting from 2 up to 24 pieces
- fully automatic process guarantees consistently high performance and quality
- flexible adjustment of the cutting process to the product characteristic

- "TWS" cutting machine has a changing system for the cutting plates available
- two plates in cutting position
- two plates in positioning/removal position
- high efficiency by avoidance of working breaks by simultaneous loading/unloading and cutting
- clocked turning of the cutting plates ensues automatically according to the running program

Maximum ease of use:

- TFT touch display with icon-guided user interface
- only one-time depositing of the cutting parameters per product type
- automatically loading of the saved parameters with a recall of any program
- data back-up and restore: easy and user-friendly via USB-connection
- many languages deposited, any language possible (depositing via user-specific translation-file)



TKSM cutting machine for the cutting of rectangular products [TKSM-L]



» TKSM-L 620 OLM Touch «



» Linear conveyor TKSM 620 as a separate unit for an easy usage «

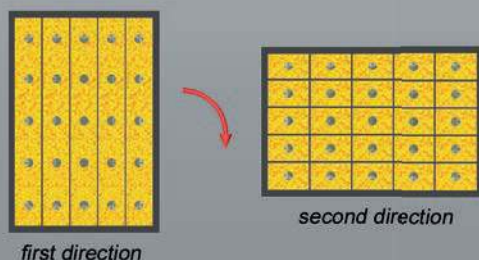


General:

- clocked linear conveyor for an exact portioning of angular products (outside of baking tray)
- cutting takes place on cutting plates (existing or optional deliverable by Krumbein.rationell)
- cutting plates with various surfaces and in many dimensions (matching with your products)
- adjusting of the size of the pieces ensues via adjustment of program parameters, no need for mechanical modification or tools
- linear conveyor can be separated from the machine, it eases the hassle at cleaning and maintenance
- machine type with working width 600mm/23.6in. (TKSM 620) and 800mm/31,5in. (TKSM 820) available

Mode of operation:

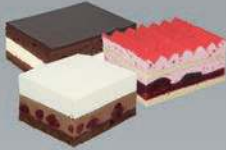
- The products can be cut in poly-directional way, by manual turning of the cutting plates. Note the working width at diagonal or transverse cut.
- It is possible to change the cutting segmentation for the following cutting cycles.



TKSM cutting machine for the cutting of round and rectangular products



+



= [TKSM-R+L]

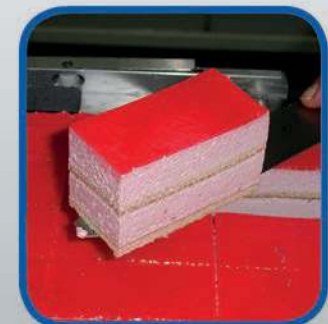
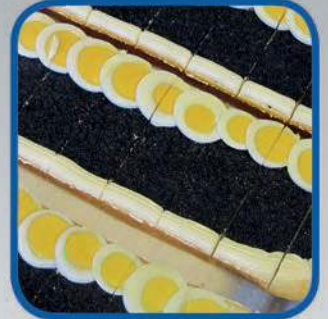
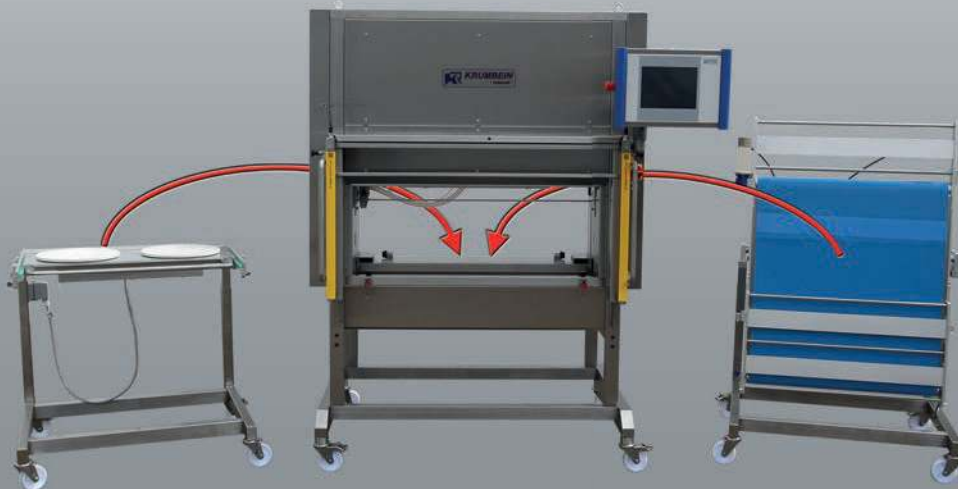


» Linear conveyor as a separate unit for an easy usage «

» TKSM-R+L 620 OLM Touch with removable round-cutting unit «

General:

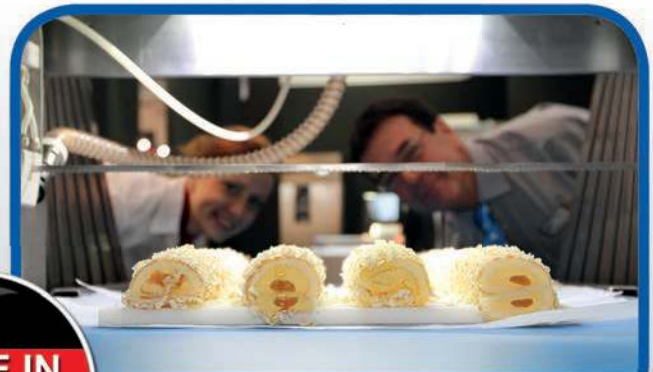
- TKSM-R+L 620 OLM for cutting of round and angular products
- machine version includes round-cutting unit as well as linear conveyor
- exchange between round cutting unit and linear conveyor happens in a very short time by insertion of the desired unit in the machine - no tool necessary -
- Self-monitored machine avoids a false connection and checks the correct fit of the conveyor components
- Incorrect operation is almost impossible



Cake and confection cutting machines

• series TKSM •

Technical specification:	TKSM-R 620 OLM Touch	TKSM-R 820 OLM Touch	TKSM-R 820 TWS Touch	TKSM-L 620 OLM Touch	TKSM-L 820 OLM Touch	TKSM-R+L 620 OLM Touch	TKSM-R+L 820 OLM Touch
Round cut	X	X	X			X	X
Linear cut				X	X	X	X
max. height of product	180mm	180mm	180mm	180mm	180mm	180mm	180mm
max. size of product	Ø 285	Ø 320mm	Ø 320mm	600 x 600mm	800 x 800mm	Ø 285mm 600 x 600mm	Ø 320mm 800 x 800mm
Machine control:							
KRS Touch	X	X	X	X	X	X	X
Option for blade-cleaning	X	X	X	X	X	X	X
Blade heating	X	X	X	X	X	X	X
LED work space lighting	X	X	X	X	X	X	X
possible number of programs	150	150	150	150	150	150	150
Dimension of the machine:							
Length	1200mm	1200mm	1200mm	1770mm	1770mm	1770mm	1770mm
Width	1100mm	1400mm	1400mm	1100mm	1400mm	1100mm	1400mm
Height	1970mm	1970mm	1970mm	1970mm	1970mm	1970mm	1970mm
Current supply:							
Electrical connection	400V 50 Hz 3 Ph+N+PE	400V 50 Hz 3 Ph+N+PE	400V 50 Hz 3 Ph+N+PE	400V 50 Hz 3 Ph+N+PE	400V 50 Hz 3 Ph+N+PE	400V 50 Hz 3 Ph+N+PE	400V 50 Hz 3 Ph+N+PE



MADE IN GERMANY

